



Sparkill Creek Watershed Characterization Project Summary

Community volunteers are working with the Hudson River Watershed Alliance to create a watershed characterization for the Sparkill Creek. Watersheds are made up of all of the lands and waters that flow to a specific body of water; the Sparkill Creek watershed includes 11.7 square miles of lands and waters in the Town of Orangetown and Village of Piermont in Rockland County, NY and the Boroughs of Northvale, Rockleigh, Norwood and Alpine in Bergen County, NJ. The Sparkill Creek flows south from Tackamack Town Park through Orangeburg and Tappan, where it meets the Sparkill Brook, which flows north from New Jersey. From there, the creek flows north through Sparkill to the Village of Piermont, where it empties to the Hudson at Piermont Marsh. The watershed includes large areas of commercial, industrial, and residential land uses, as well as parkland in higher elevation areas.

What is a watershed characterization?

A watershed characterization uses existing natural resources, land use, water quality, and other information to describe a watershed and outline the issues that affect water and people. Volunteers from around the Sparkill Creek watershed have formed an Advisory Committee to guide the effort, which will result in a written report by the end of 2023.

The Sparkill Creek watershed characterization report will use maps and narrative descriptions to summarize the watershed's geography and physical conditions, and will compile existing data on watershed lands, waters, and people, as well as trends in natural and human-made features. The report will help people understand watershed conditions and will be the foundation for a future watershed plan that identifies specific actions to protect and enhance the area's water resources.

Who is involved?

The project is led by the volunteer Sparkill Creek Watershed Characterization Advisory Committee, which includes representatives from the Sparkill Creek Watershed Alliance, Town of Orangetown, Village of Piermont, Rockland County, Lamont-Doherty Earth Observatory, St. Thomas Aquinas College, Hudson Valley Regional Council, and the NYS DEC Hudson River Estuary Program. Technical assistance is provided by the Hudson River Watershed Alliance Executive Director Emily Vail and Watershed Program Specialist Jen Benson, as well as consultant Karen Strong, Strong Outcomes, LLC.

How can I learn more?

For more information, please contact Advisory Committee member Larry Vail, Sparkill Creek Watershed Alliance, at lawrencedvail@gmail.com.

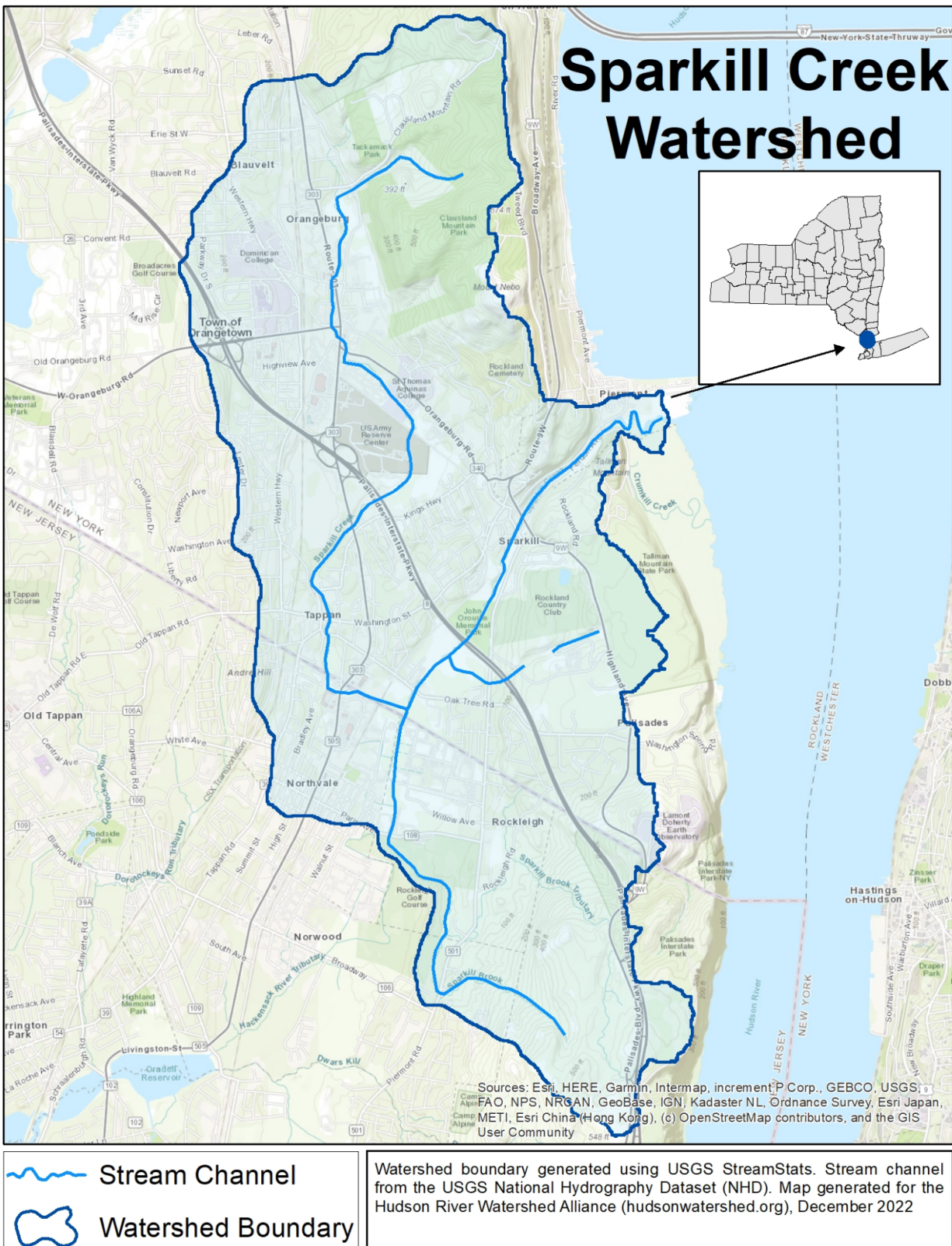
This program is supported by funding from the Hudson River Estuary Program, New York State Department of Environmental Conservation, with support from the New York State Environmental Protection Fund, in cooperation with NEIWPCC.



Department of
Environmental
Conservation

Hudson River
Estuary Program





This is a map of the Sparkill Creek watershed, which includes all the lands and waters that flow to the Sparkill Creek. The Sparkill Creek flows south from Tackamack Town Park through Orangeburg and Tappan, where it meets the Sparkill Brook, which flows north from New Jersey. From there, the creek flows north through Sparkill to the Village of Piermont, where it empties to the Hudson at Piermont Marsh.