



Punch Brook-Roeliff Jansen Kill Watershed Characterization

Project Summary

Community volunteers are working with the Hudson River Watershed Alliance to create a watershed characterization for a part of the Roeliff-Jansen Kill watershed that includes the Punch Brook, a stream that flows into the Roeliff-Jansen Kill. Watersheds are made up of all of the lands and waters that flow to a specific body of water; the Punch Brook-Roeliff Jansen Kill watershed includes 47.5 square miles of lands and waters. Communities within the Punch Brook-Roeliff Jansen Kill watershed include the Towns of Ancram, Gallatin, and Copake in Columbia County, and the Towns of North East and Pine Plains in Dutchess County. The watershed has a mix of land uses, including large areas of forest, farmland, and wetlands.

What is a watershed characterization?

A watershed characterization uses existing natural resources, land use, water quality, and other information to describe a watershed and outline the issues that affect water and people. Volunteers from around the Punch Brook-Roeliff Jansen Kill watershed have formed an Advisory Committee to guide the effort, which will result in a written report by the end of 2023.

The Punch Brook-Roeliff Jansen Kill watershed characterization report will use maps and written descriptions to summarize the watershed's geography and physical conditions, and will compile existing data on watershed lands, waters, and people, as well as trends in natural and human-made features. The report will help people understand watershed conditions and will be the foundation for a future watershed plan that identifies specific actions to protect and enhance the area's water resources.

Who is involved?

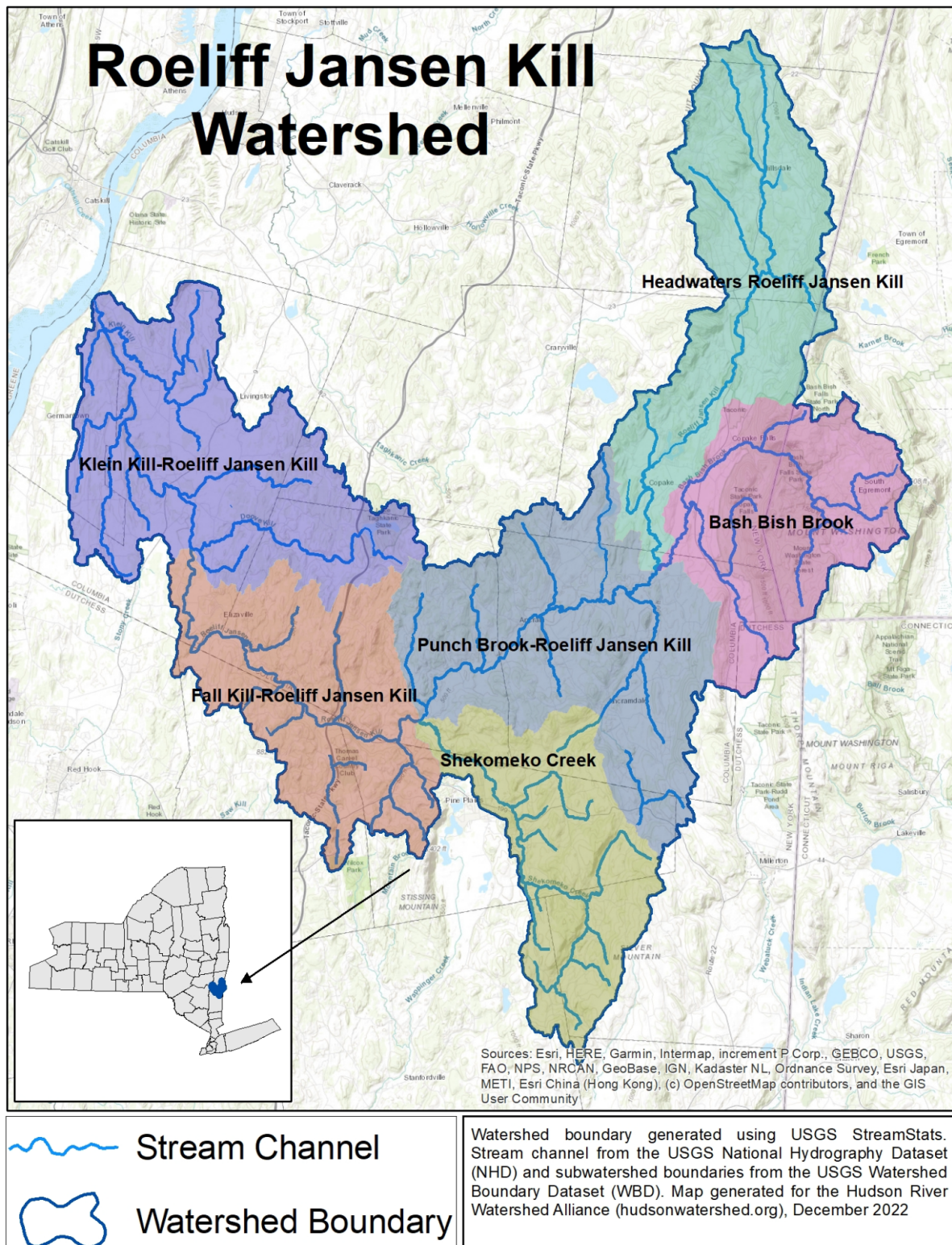
The project is led by the volunteer Punch Brook-Roeliff Jansen Kill Watershed Characterization Advisory Committee. Members include representatives from the Town of Ancram, Town of Gallatin, Town of Copake, Roe Jan Watershed Community, Columbia Land Conservancy, and the NYS DEC Hudson River Estuary Program. Technical assistance is provided by the Hudson River Watershed Alliance Executive Director Emily Vail and Watershed Program Specialist Jen Benson, as well as consultant Karen Strong, Strong Outcomes, LLC.

How can I learn more?

For more information, please contact Advisory Committee member Colleen Lutz, Town of Ancram Conservation Advisory Committee, at colleen.lutz.77@gmail.com.

This program is supported by funding from the Hudson River Estuary Program, New York State Department of Environmental Conservation, with support from the New York State Environmental Protection Fund, in cooperation with NEIWPCC.





This is a map of the Roeliff Jansen Kill watershed, with the Punch Brook-Roeliff Jansen Kill Watershed shown in gray. It includes the main stem of the Roeliff Jansen Kill from just north of Ancram's Drowned Lands Swamp to just southwest of the Gallatin hamlet of Gallatinville. The Punch Brook flows from (a corner of North East), near the Pine Plains hamlet of Pulver's Corners, north through the hamlet of Ancramdale, where it meets with the Roeliff Jansen Kill at the at the north end of the Drowned Lands Swamp