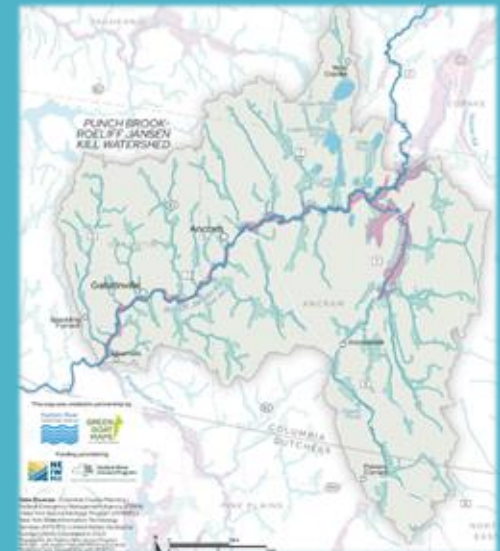
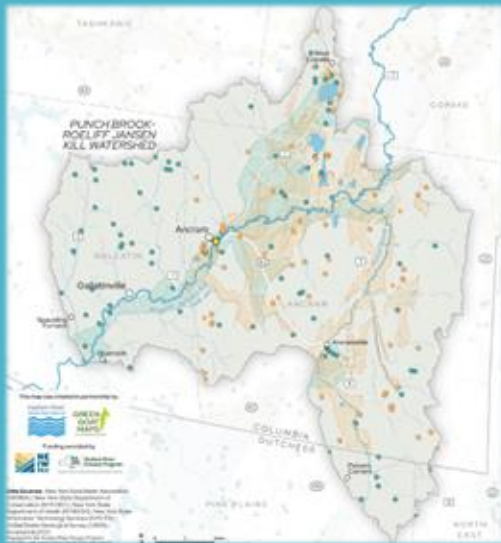


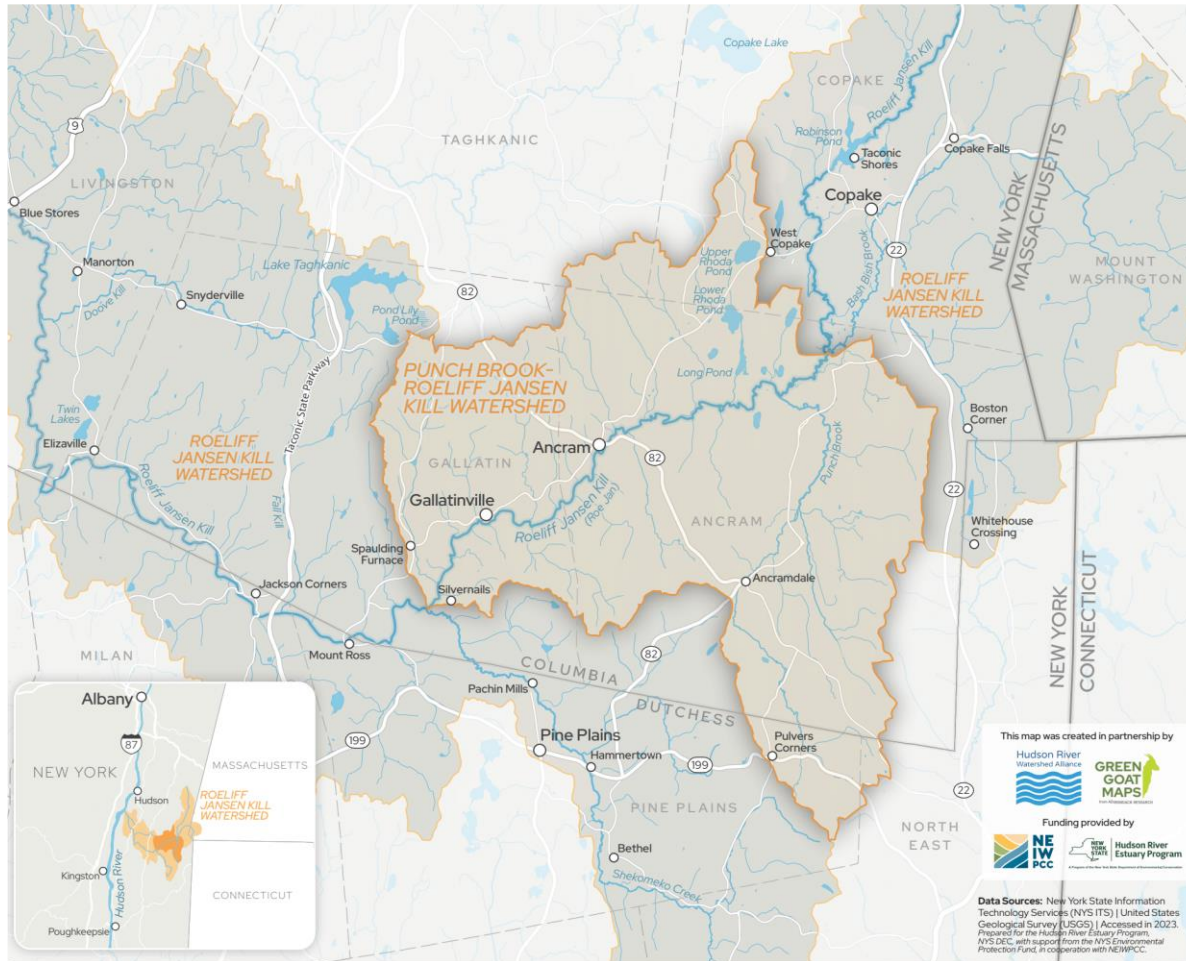
Punch Brook Characterization

Process and Lessons Learned

Colleen Lutz

Roe Jan Watershed Community



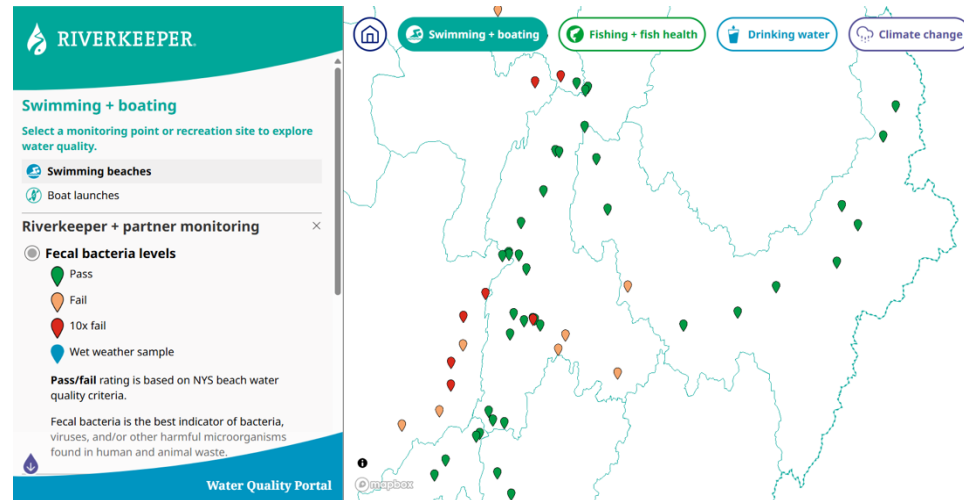


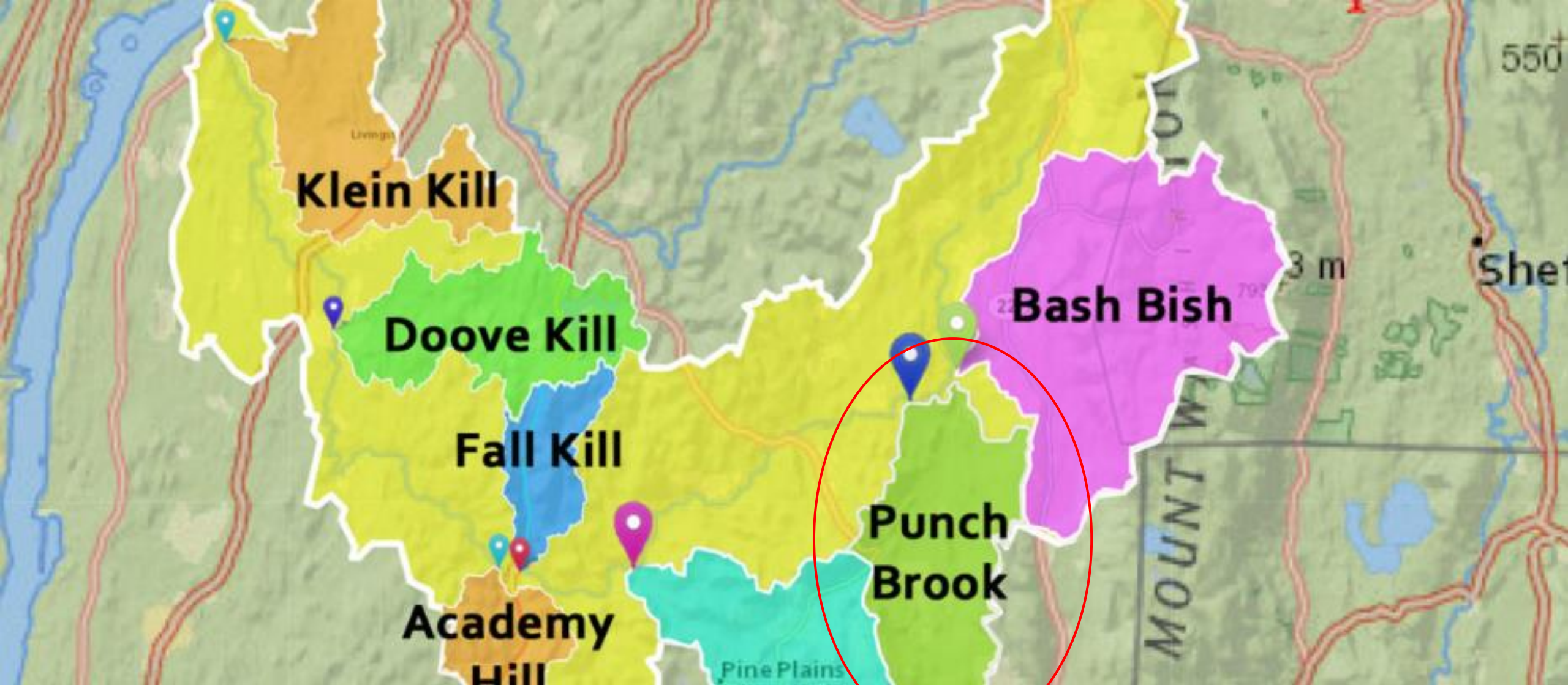
Presentation Outline

- Roe Jan Watershed Community
- Punch Brook Subwatershed
- Why Characterize the Watershed?
- Project Process and Timeline
- Lessons Learned and Next Steps

Roe Jan Watershed Community

- Community Scientist Initiative
- Partnership with RiverKeeper and Bard Center for Environmental Resources Center





Punch Brook Sub Watershed

Why Characterize the Watershed?

Questions to ask:

- What natural resources are found within the watershed?
- What are the land uses found within the watershed?
- What is the water quality?
- Are there known existing water quality issues within the watershed?

Project Process and Timeline

- Apply for Technical Assistance (2022)
- Organize a watershed advisory committee (2022)
- Delineate the focus watershed and gather existing data (2022-2023)
- Summarize the information into a report (2023-2024)
- Present findings to the Community (2024)

Punch Brook-Roeliff Jansen Kill Watershed Characterization Report



March 2024

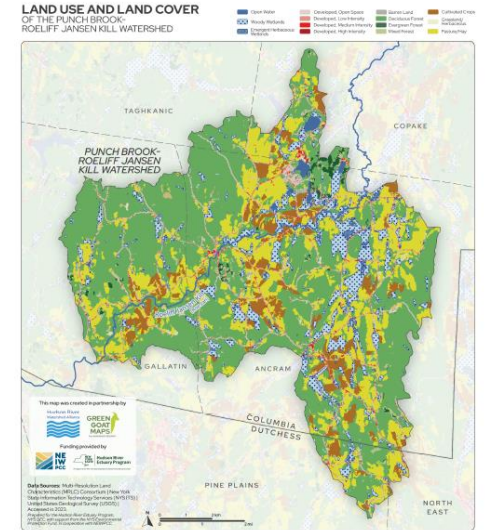


Figure 9. Land Use and Land Cover in the Punch Brook-Roeliff Jansen Kill watershed.

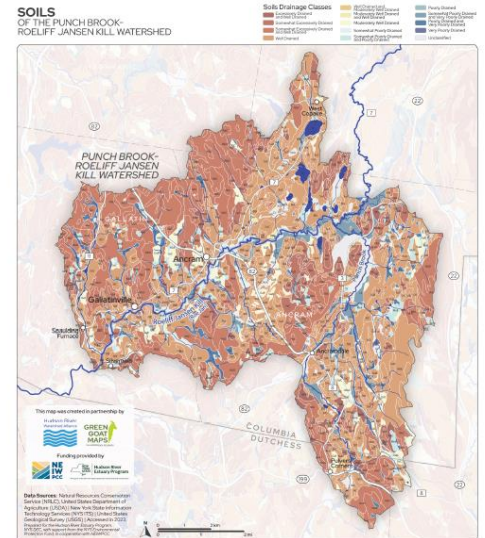


Figure 8. Soils by Drainage Classification

Lessons Learned and Next Steps

Lessons Learned:

- Get your community excited about the project prior to developing your advisory committee
- Make sure to communicate the progress about the project and major milestones
- Continuously share the information with the entities that need it, even if it is to just check in to see if they are using it.

Next Steps:

- Evaluate the capacity of our watershed organization
- Identify the appropriate project, i.e characterization or watershed management plan based on that organizational capacity

Thank you!

Contact information:

Colleen Lutz

Town of Ancram Supervisor and Project
Lead

Roe Jan Watershed Community Board
Member

colleen@ancramny.org

518-567-9131 (cell)

Special Thanks to:

Amy Gold

Jay Lorenz

Eli Arnow

Kaare Christansen

Mary Ann Carrick

Cara Boyle

Jamie Purniton

Nancy Kuster

Carol Smillie

Heidi Bock

Anna Palmer (NYS DEC)

Beth Roessler (NYS DEC)

Jen Benson

Hudson River Watershed Alliance –Emily Vail